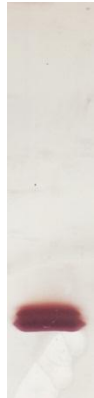


Natural Bet v 1

Product Code: NA-BV1-1

| | |
|----------------|--|
| Allergen: | nBet v 1 (<i>Betula pendula</i> allergen 1) |
| Lot No: | XXXXX |
| Source: | Birch pollen (<i>Betula pendula</i>) |
| Mol. Wt: | 18 kDa |
| Purification: | From birch pollen extract by multi-step chromatography. Purity > 95 % by silver stained SDS-PAGE |
| Concentration: | See product insert. |
| Formulation: | Preservative-free and carrier-free in phosphate buffered saline, pH 7.4. Sterile filtered. |
| Storage: | Store at -20°C. Avoid repeated freeze-thaw cycles. |
| Note: | Purified natural Bet v 1 appears as a triplet of 18-20kD proteins representing distinct isoforms of Bet v 1 (1). |



nBet v 1

Allergens are provided for research and commercial use in vitro:
Not for human in vivo or therapeutic use.

REFERENCES:

1. Batard, T. et al: Characterization of wild-type recombinant Bet v 1a as a candidate vaccine against birch pollen allergy. *Int Arch Allergy Immunol* 2005, 136 (3), 239-249.
2. Breiteneder, H. et al: The gene coding for the major birch pollen allergen Bet v 1, is highly homologous to a pea disease resistance response gene. *EMBO J* 1989, 8 (7), 1935-1938.
3. Spangfort, M. D. et al: Dominating IgE-binding epitope of Bet v 1, the major allergen of birch pollen, characterized by X-ray crystallography and site-directed mutagenesis. *J Immunol* 2003, 171 (6), 3084-3090.
4. Swoboda, I. et al: Isoforms of Bet v 1, the major birch pollen allergen, analyzed by liquid chromatography, mass spectrometry, and cDNA cloning. *J Biol Chem* 1995, 270 (6), 2607-2613.
5. S. Vieths et al.: Establishment of recombinant major allergens Bet v 1 and Phl p 5a as Ph. Eur. Reference standards and validation of ELISA methods for their measurement. *Pharmeuropa Bio & SN* 2012; 118-13.